



ANNUAL REPORT

2022 - 2023



P R A Y A S

EMPOWERING CHANGE, ENVISIONING SUSTAINABLE TOMORROW



IN THIS REPORT



I CEO'S ANNUAL ADDRESS.....	01
------------------------------------	-----------

I ABOUT SUVIDHA.....	03
-----------------------------	-----------

- OUR VISION
- OUR MISSION
- 5Es APPROACH
- ONLINE MANAGEMENT SYSTEM: DASHBOARD
- THEMATIC AREAS
- SDGs ADDRESSED

I THEMATIC AREAS.....	09
------------------------------	-----------

- CLIMATE CHANGE AND BIODIVERSITY MANAGEMENT
- SUSTAINABLE AGRICULTURE
- NATURAL RESOURCE MANAGEMENT
- EDUCATION
- PROMOTION OF ALTERNATIVE LIVELIHOOD
- WOMEN EMPOWERMENT

I GAON ORIGINALS.....	39
------------------------------	-----------

I VISION AND STRATEGY MEET ACTION PLAN (2023-2028).....	43
--	-----------

I FINANCIAL REPORT	45
---------------------------------	-----------

I PARTNERS AND DONORS.....	52
-----------------------------------	-----------

CEO'S ANNUAL ADDRESS

I am pleased to present SUVIDHA's Annual Report for the year 2022-23, a testament to our commitment to "Empowering Change, Envisioning a Sustainable Tomorrow." This year has been defined by resilience, dedication, and remarkable achievements, underscored by the **successful onboarding of our 100th project.**

In the reporting year, SUVIDHA initiated eight impactful projects across vital themes, extending its reach to **78 districts in 22 states, including 16 Aspirational districts.** Notably, we completed four projects and sustained the momentum with 25 ongoing projects, furthering our reach and impact.

Our sustainable agriculture programs have been a standout success, cumulatively impacting the lives of **105406 farmers across multiple states.** These initiatives not only increased farmers' income but also raised awareness about ecological sustainability, providing valuable knowledge on climate resilience, soil health, and crop diversification. This resulted in a substantial increase in yield and rekindled interest in agriculture among many farmers.

Our climate projects showcased an effective synergy between environmental conservation and community well-being. Through the adoption of climate change mitigation technologies, we achieved an estimated reduction of **49,585 tons of carbon emissions per year and a reduction of 44,616 tons in annual fuelwood consumption.** These efforts not only addressed climate change but also created income diversification opportunities for beneficiaries.

In education, SUVIDHA's initiatives significantly increased school enrollment rates and decreased dropout rates. Digital learning aids and infrastructural improvements, including sanitation facilities, **improved the lives of 37607 students.**

The livelihood section focused on creating enterprises and processing units for rural communities, resulting in thriving enterprises with improved functionality and increased business activities. Importantly, the sustainability of these enterprises is emphasized, with ownership vested in the community itself.

Our annual report includes a detailed breakdown of our financials, showcasing our commitment to transparent and responsible financial management. In the reporting year 2022-23, SUVIDHA made significant strides in extending support and benefits to some of the most deprived and vulnerable communities.

As we look ahead, we are excited about the opportunities and challenges the coming year will bring. I extend my deepest gratitude to our team, donors, and the community for their unwavering commitment. Your trust and support empower SUVIDHA to achieve even greater things in the coming year and beyond.

Sincerely,
Deepak Pandey



DEEPAK PANDEY
CEO, SUVIDHA

ABOUT SUVIDHA

SUVIDHA is a dynamic and passionate non-governmental organization committed to making a positive and lasting impact on urban and rural marginalized communities for social, economic and environmental transformation. Founded in 2004, we have been tirelessly working towards Sustainable Agriculture, Natural Resource Management, Education and Climate Mitigation as well as the generation of additional livelihood for the people in need, especially women and youth.

At SUVIDHA, we hold strong to our core values of respect, stewardship, ethics, learning, and innovation. These principles serve as our North Star, shaping how we conduct ourselves and interact with our people and stakeholders. Our overarching goal is to foster a world where communities are empowered to independently address the pressing personal, social, and environmental challenges of today and those that lie ahead. With the support of a dedicated team of professionals, partners, and volunteers who closely collaborates to create sustainable, replicable, and scalable models of development, accessible to all.

The organization's interventions have brought about lasting changes across different sectors and regions in India. With the support of various funders involved in its various programmes, SUVIDHA aims to create replicable and scalable models of development, accessible to all.



OUR VISION

To become instrumental in bringing long term Social, Economic and Environmental changes to create a resilient future and betterment of communities.



OUR MISSION

To drive global sustainability by enabling over a million farmer households to thrive in their local rural economies by 2030, with doubled household incomes, improved livelihoods, and better quality of lives through a transition to climate-smart agriculture, clean energy and efficient natural resource management practices, women empowerment and smart education.

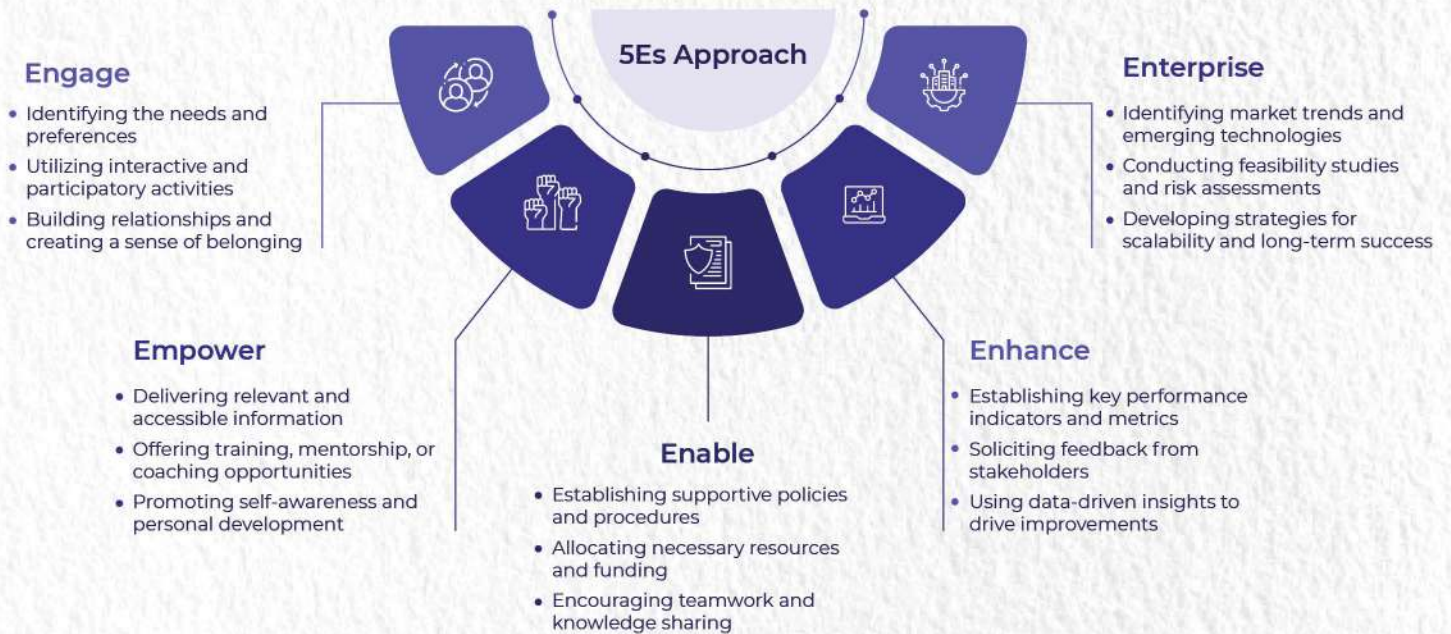




5Es APPROACH

SUVIDHA employs a participatory approach to address the needs of the most vulnerable in society. We engage the community in project planning, execution, and monitoring, ensuring they understand the objectives and fostering a sense of responsibility and ownership over project

assets. Beneficiary selection is also a community-driven process, with their input and approval based on vulnerability criteria. Our organization emphasizes a robust exit strategy to ensure the sustainability of interventions, assets, and systems. This empowers communities to continue benefiting long after project completion.



ONLINE MANAGEMENT SYSTEM: DASHBOARD

SUVIDHA has developed a digital platform to enable a single window of Information transaction and storage with the objective of data management. The platform enables collective knowledge bank, where various management hierarchies are in sync with the activities of the project along with relevant information. The project uploads monthly progress of the scheduled activities along with project report and pictures in the dashboard. It ensures that the organization's programs are being implemented effectively and efficiently and that progress towards its goals is tracked.

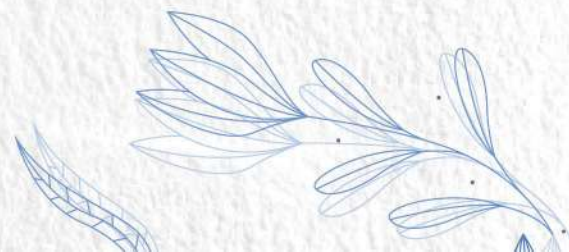
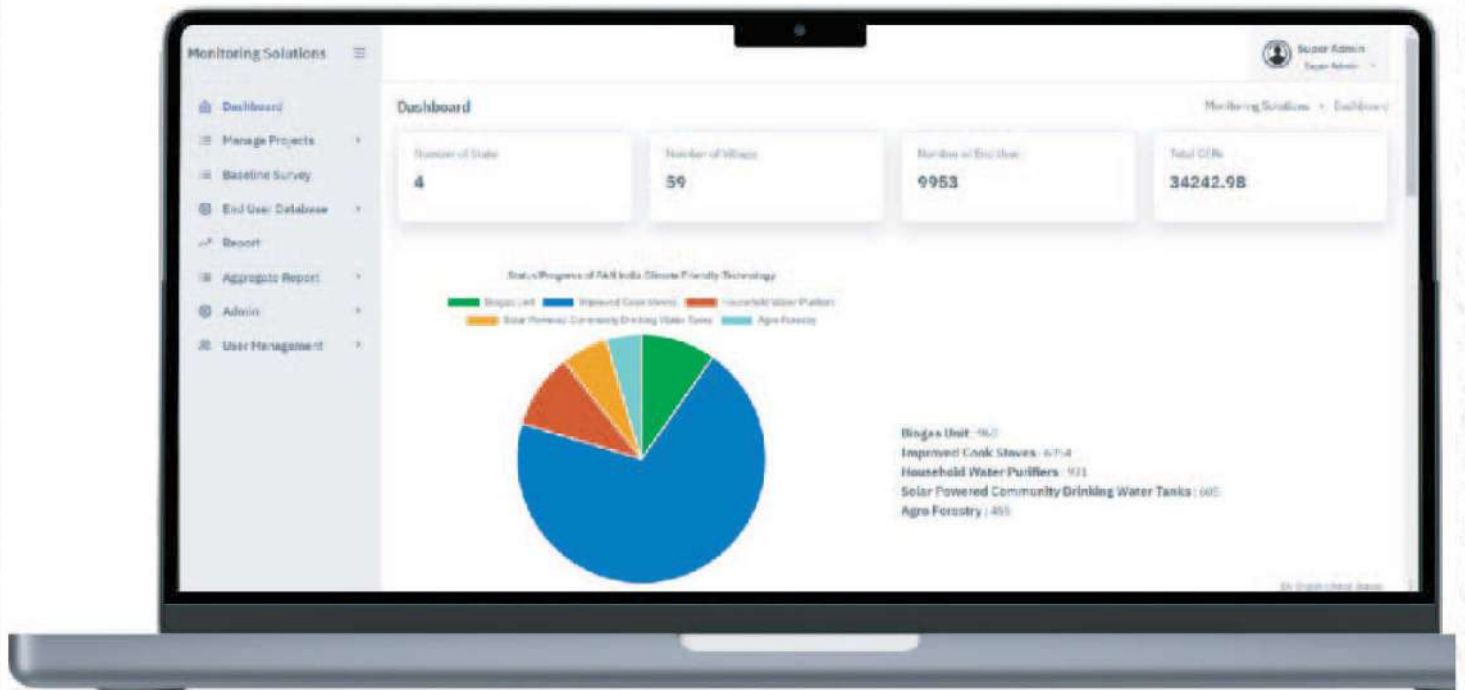
PROJECT FEEDBACK MECHANISM

A stakeholder consultation exercise is mandatory at beginning of every project wherein all community members, direct and indirect beneficiaries are invited for the complete of overview of project activities and project goals and objectives. The feedback of community on project activities is paramount and in order to register and address feedback, grievance or inputs of the project beneficiaries a Toll-Free Number has been issued at the project areas through which the beneficiary can directly reach the head office with their feedback for timely addressal.

PROGRAMME MONITORING MECHANISM OF SUVIDHA

SUVIDHA has adopted digital monitoring solutions, wherein each project has its digital MIS & Reporting solution. SUVIDHA also integrated technologies like Geo Tagging & Satellite Imagery in some of its projects depending upon project requirements.

The real time updates are made in the digital monitoring solution of SUVIDHA by the field team which are verified by project SPOCS/ leaders and a monthly report is subsequently submitted internally as well as to the funding agencies.



IMPACT MAP



 CLIMATE CHANGE AND BIODIVERSITY MANAGEMENT

 PROMOTION OF ALTERNATIVE LIVELIHOOD

 NATURAL RESOURCE MANAGEMENT

 SUSTAINABLE AGRICULTURE

 WOMEN EMPOWERMENT

 EDUCATION

SUVIDHA'S COVERAGE



THEMATIC AREAS

CLIMATE CHANGE AND BIODIVERSITY MANAGEMENT

SUSTAINABLE AGRICULTURE

NATURAL RESOURCE MANAGEMENT

EDUCATION

PROMOTION OF ALTERNATIVE LIVELIHOOD

WOMEN EMPOWERMENT

SDGS ADDRESSED

1 NO POVERTY	2 ZERO HUNGER
3 GOOD HEALTH AND WELL-BEING	4 QUALITY EDUCATION
5 GENDER EQUALITY	6 CLEAN WATER AND SANITATION
7 AFFORDABLE AND CLEAN ENERGY	8 DECENT WORK AND ECONOMIC GROWTH
9 INDUSTRY, INNOVATION AND INFRASTRUCTURE	10 REDUCED INEQUALITIES
12 RESPONSIBLE CONSUMPTION AND PRODUCTION	13 CLIMATE ACTION
14 LIFE BELOW WATER	15 LIFE ON LAND
17 PARTNERSHIPS FOR THE GOALS	SUSTAINABLE DEVELOPMENT GOALS





CLIMATE CHANGE AND BIODIVERSITY MANAGEMENT

India was the third largest emitter of carbon dioxide by volume in 2020. India has also confirmed pledges to generate 50% of its electricity from non-fossil fuel sources by 2030, and its target for maintaining forest cover, which acts as a carbon sink.¹ Greater efforts are needed to address people's specific concerns, thus SUVIDHA initiated its journey of climate change mitigation in 2012.

SUVIDHA has adopted Clean Development Mechanism (CDM) technologies such as Biogas, Solar Lighting, Improved Cooking Stoves, Water Purifiers, Solar Drinking Water Tanks and Plantation to aid vulnerable communities and the environment.

SUVIDHA, generates Verified Carbon Emission Reductions (VERs) to sustain the climate projects by linking income with the alternative fuel technology. **Currently, 64013 Carbon Credits are in circulation, with revenue to follow post-interventions of the Climate Project.**²

The sustainable interventions have developed alternative livelihoods through adoption of climate resilient practices to sustainably harvest economic and ecological benefit.



1.25 Lakh
Carbon Offset
(Ton)



3.25 Lakh
Fuelwood Saved
(Ton)



31989
Households
Impacted

CDM TECHNOLOGIES IMPLEMENTED IN THE REPORTING YEAR

Biogas units have provided clean cooking fuel, curbing greenhouse gases and women's labor. Organic fertilizer, the by-product has enhanced economic gains sustainably.

Improved cook stoves protected rural households, notably women, from indoor pollution. The dependency on fuelwood consumption has reduced by 70% and fostered productivity, health and reduced forest strain.

Solar solutions such as household and street lights, drinking water tanks, rooftops have empowered communities with uninterrupted power supply, reduced electricity bills, safety by illuminated surroundings, water security and enhanced digital literacy. Solar-powered drinking water tanks and rooftop installations have been placed in communal areas to benefit the entire community. The shift to renewable energy has ensured technology longevity, resilience, and enriched lives.

Plantation of native and fruit trees has provided both environmental benefits and acted as sources of income, intertwining nature and livelihoods harmoniously. The plantation has been done at both, household and community level.

¹Source: UN's Emission Gap Report (2020-21)

²Source: Gold Standard Website, accessed on 15th April 2023, <https://registry.goldstandard.org/projects/details/687>



CDM TECHNOLOGIES IMPLEMENTED IN THE REPORTING YEAR

4158 Estimated Carbon Offset (Tons per year)

693 BIOGAS UNIT

2356 Estimated Fuelwood Saved (Tons per year)

11560 Estimated Carbon Offset (Tons per year)

5070 IMPROVED COOK STOVES

15210 Estimated Fuelwood Saved (Tons per year)

100 Estimated Carbon Offset (Tons per year)

200 DOMESTIC SOLAR LIGHT

646 Estimated Carbon Offset (Tons per year)

359 WATER PURIFIERS

862 Estimated Fuelwood Saved (Tons per year)

1680 Estimated Carbon Offset (Tons per year)

14 SOLAR POWERED COMMUNITY SAFE DRINKING WATER TANKS

2240 Estimated Fuelwood Saved (Tons per year)

1021 Estimated Carbon Reduction (Tons per year)

72926 SAPLINGS OF PLANTATION

210 Estimated Carbon Offset (Tons per year)

300 SOLAR STREET LIGHT

480 Estimated Carbon Offset (Tons per year)

4 SOLAR ROOF TOPS



CASE STUDY

TRANSFORMING COMMUNITIES THROUGH SOLAR-POWERED INTERVENTIONS

Assam faced a critical issue of water contamination, primarily due to high levels of iron and arsenic. This posed a severe threat to public health. Furthermore, insufficient irrigation hindered agricultural growth, leading to stagnant livelihoods.

To address these challenges, SUVIDHA introduced solar-powered interventions- community water tanks and advanced filtration, providing **clean and safe drinking water to 8 villages, benefiting 310 households**, combating waterborne diseases, and enhancing public health.

Additionally, solar energy was harnessed to propel irrigation, leading to cultivation in **460 acres of land**. This initiative **benefited 180 households**, bolstering agriculture and local livelihoods and thereby breaking the cycle of stagnation.

The villages faced challenges due to unstable power supply, particularly at night. As a solution, **175 solar street lights** were installed in community areas to enhance safety of **1902 households**. Additionally, **465 domestic solar lights** were distributed to households experiencing either no power or unreliable power supply.

Clean water enhanced health, and solar irrigation boosted agriculture, fostering self-sufficiency and higher income. The solar lights offered stable lighting for communities and households, mitigating human-wildlife conflicts.

The transformative journey stands as a testament to how innovation and community empowerment can bring about substantial change while laying the foundations for a sustainable future.



SUSTAINABLE SOLUTIONS

REDUCING DRUDGERY AND EMPOWERING WOMEN

The case study sheds light on the remarkable progress of Shanti Devi, a woman from a vulnerable household in Gebua village, Ramnagar, Uttarakhand. Prior to project interventions, her family struggled with daily needs. Wood collection from the forest posed challenges, fuelwood for cooking caused health issues, and the high cost of LPG gas added to financial hardship.

A transformative shift occurred when SUVIDHA introduced the concept of biogas plants in village meetings, emphasizing the benefits for households engaged in animal husbandry. Inspired by the possibilities, Shanti Devi opted to install a biogas plant.

The time and energy saved from fuelwood collection **reduced her drudgery** and enabled her to join a community group, providing with the chance to explore income enhancing opportunities. Thus, she strategically

opened a fast-food center with her husband, utilizing biogas-enabled cooking for food preparation, eliminating the need for external fuel sources.

The adoption of biogas and the entrepreneurial venture significantly transformed Shanti Devi's socio-economic condition. After project intervention, the **monthly income of the household is increased to ₹22,000/- approximately** (from the fast-food center and milk production), along with cost saving of ₹900/month from LPG gas.

Shanti Devi contributed to the well-being of her children, while also promoting environmental sustainability through reduced carbon emissions. Her success inspired others to explore biogas units, leading to a resurgence in livestock keeping in the village. This ripple effect of sustainable change has also reduced wildlife conflict in the region.





SUSTAINABLE AGRICULTURE

Sustainable agriculture, agroecology, regenerative agriculture, organic farming, and natural farming are some of the most common terms used to describe various sustainable agriculture approaches. Farming in India faces a sustainability challenge due to its overreliance on chemical inputs. There is an urgent need to address the challenges posed by traditional agricultural practices, which often lead to environmental degradation, loss of biodiversity, and long-term unsustainability. Thus, sustainable agriculture offers a holistic and forward-thinking approach to food production, recognizing the interdependence between human well-being, ecological health, and economic viability. It transforms agricultural systems from a short-sighted, resource-depleting model to a holistic and resilient approach that balances ecological conservation, social equity, and economic prosperity.

SUIDHA has been working across India to bring sustainable change in farming practices while empowering marginal farmers with better income and business opportunities.



12
States



105906
Farmers



46
Districts



154574
Acres



149
Blocks



1979
Clusters



2014
Villages



18
FPOs



INTERVENTIONS IMPLEMENTED IN THE REPORTING YEAR



CAPACITY BUILDING OF FARMERS AND DEMONSTRATION OF PACKAGE OF PRACTICES

Through training, workshops, demonstration farms, resource centres, and expert guidance, farmers have gained valuable insights into organic farming practices, resulting in improved knowledge and skills, increased income, and the adoption of eco-friendly techniques.

2336 Capacity Building Programs Conducted

537 Demonstration villages established and facilitated

103647 Farmers Participated



SOIL FERTILITY REPLENISHMENT

Techniques like crop rotation, organic matter enrichment, responsible nutrient management, agroforestry, and water management have been employed to rejuvenate and preserve soil fertility, resulting in improved soil health and enhanced yield production.

1723 Residue Analysis Done

50 Soil Testing Done

32634 Compost Units Established and Facilitated



STRENGTHENING FARMERS THROUGH FARMER PRODUCER ORGANIZATIONS

Mobilizing farmers into Farmer Producer Organizations (FPOs) has empowered agricultural communities, strengthened resilience, and enhanced bargaining power. FPOs have played a crucial role in marketing produce, branding, packaging, and promoting value-added products, maximizing benefits for marginal farmers.

4 FPO in the reported period

4677 farmers benefited



CROP DIVERSIFICATION AND INPUT SUPPORT

The interventions promoted a shift from traditional to high-value cash crops like vegetables, medicinal plants, flowers, and spices. Input support and botanical extract units facilitated crop diversification, providing organic pesticides for improved crop health and higher yields, resulting in increased returns for farmers.

Seed Distribution and facilitated to

14647 farmers

11625 Botanical Extract Units Facilitated



ESTABLISHMENT OF IRRIGATION INFRASTRUCTURE

Targeted irrigation facilities, including solar-powered systems and ponds, have alleviated water scarcity for marginal farmers, enabling year-round cultivation, reducing input expenses, and increasing farm income.

7 Solar Powered Irrigation Facility

560 Acre Area Covered under Irrigation



FARM MACHINERY AND EQUIPMENT

The utilization of knapsack sprayers in organic farming has resulted in increased efficiency and reduced labour intensity. The sprayers enable precise application of fertilizers and pesticides, facilitating optimal resource utilization and minimizing wastage. The sprayers empower farmers with an affordable and accessible tool to enhance their agricultural practices.

31517 Knapsack Sprayers Distributed and Facilitated



FLORICULTURE

In remote villages around Maheshwar Block, Madhya Pradesh, traditional agriculture struggled to provide substantial income. To address this, floriculture, particularly marigold cultivation, was introduced. Within 3-4 months, farmers doubled their earnings compared to cotton cultivation. This success resulted from quality seed inputs, technical support, scientific methods, and market linkages in local and national markets. Over 120 farmers benefited, with 65 switching to marigold cultivation, earning an average of Rs. 25,000 per season. Around 50 farmers earned over Rs. 45,000 per season. This initiative attracted more farmers, such as Mr. Vasudev Patidar, who praised the profits gained. This, Floriculture boosted the income of marginal farmers. Additionally, the diversification of agricultural production through floriculture has reduced risk and increased resilience in the communities.



CASE STUDY

CULTIVATING DREAMS

DEVENDRA KUMAR'S JOURNEY FROM STRUGGLE TO SUCCESS

In the face of financial hardships, Devendra Kumar, resident of Village Panchayat Narsinghdanda, Champawat District, Uttarakhand confronted the challenges of providing for his family.

He faced a series of challenges, including limited land for agriculture, unpredictable climatic conditions and the menace of wild animals that constantly threatened his crops, introducing uncertainty and losses to his endeavours. Additionally, conventional farming methods hindered his productivity and income potential.

Devendra participated in capacity

building programs as a result of which he shifted to vegetable cultivation. The application of technical training and scientific methods markedly boosted his yield. With the project's support, he then established a polyhouse for off-season vegetable cultivation and adopted mushroom farming. This resulted in a notable **annual income increase of Rs. 60,000/-**.

Devendra's committed journey yielded a stable income from various avenues such as horticulture, dairy, poultry, and goat rearing, exemplifying a classic case of income diversification. From a life overshadowed by struggle, he has emerged as a testament to the potential for change and resilience.



ORGANIC TRANSFORMATION

LOKPAL SINGH'S JOURNEY FROM STRUGGLE TO PROSPERITY

In Chamoli District, farmers grappled with challenges such as limited knowledge, traditional methods, excessive chemical fertilizer use, and diminishing yields due to small landholding, adverse climate conditions, and growing wildlife threats. These factors, compounded by increased expenses for seeds, chemicals, and pesticides, worsened the difficulties faced by farmers such as Lokpal Singh in Tharali Block, Chamoli, Uttarakhand who struggled to make a living and meet his family's basic needs.

The Namami Gange project aimed at promoting organic farming to improve economic conditions of farmers. Lokpal Singh, among others embraced this opportunity, shifting from extensive use of chemical fertilizers to organic

alternatives. Though he didn't experience immediate growth in his crop yield, but adoption of organic practices improved the soil quality. Over the course of two years, without chemical fertilizers, pesticides, and implementing best practices, **he achieved better yields, resulting in increased income and household stability.**

Now, Lokpal not only meets his family's needs but also sells organic produce at premium prices, significantly improving his financial situation. His remarkable journey stands as evidence that transitioning to organic practices not only revitalizes the land but also rejuvenates livelihoods. His success inspires fellow farmers to embrace sustainable practices, showcasing the transformative impact.



NATURAL RESOURCE MANAGEMENT

Natural resources are the foundation of rural economies, supporting the well-being of those who depend on them. Recognizing the significance of sustainable resource management is essential for securing long-term rural livelihoods and preserving resources for the future. Our initiatives such as farm pond, stop dams and well renovation has safeguarded and improved groundwater recharge, checked water flooding, access and availability of water for rural communities.

INTERVENTIONS IMPLEMENTED IN THE REPORTING YEAR



WELL REVITALIZATION

In rural Madhya Pradesh, communities heavily relied on wells for daily water needs, including drinking, cooking, crop irrigation, and livestock care. Over time, these wells deteriorated, posing risks to water quality, quantity, and community health. Recognizing their significance, we embarked on a well restoration initiative to secure reliable water sources, especially prioritizing safety for children and livestock. The well revitalization has significantly benefited the locals, meeting their water needs for consumption and agriculture. Safer wells with sturdy covers were ensured, reducing risks to community members, especially children and wandering animals. This holistic approach increased water availability and accessibility while reducing potential dangers, empowering the community for a sustainable future.

05 Community well Restored

260 Households Benefited



BUILDING STOP DAMS

The Construction of stop dams in Maheshwar, MP has improved access to water resources and led to increased agricultural production, fostering sustainable farming practices and enhancing the overall livelihoods of the local farming community.

03 Stop Dams

150 Acres of Land

300 Farmers Benefited



FARM POND RESTORATION

Rejuvenation of Farm Ponds in Bishwanath Charali, Assam has resulted in accessibility to reliable water source for irrigation, leading to enhanced agricultural productivity. Additionally, the rejuvenated ponds play a crucial role in supporting livestock, addressing water scarcity concerns in the community.

03 Farm Ponds Rejuvenated

60 Households Benefited





In the reporting period, the "**Spring Sanctuary Development in Mid-Hills of Himalayan Region for Ensuring Water Security in Changing Climate**" project, funded by Kutch Railway Company (KRC), has commenced in Nainital District, Uttarakhand. The project aims to boost the recharge potential of natural water resources. This involves constructing contour trenches, earthen ponds, Gabion check dams, renovating water bodies and afforestation. this is section for NRM.

CASE STUDY

IMPROVING THE LIVING ENVIRONMENT OF SANTHALI TRIBE

SUIDHA has transformed the lives of the Santhali Tribe in two villages of Behali Block, Assam by restoring a 2 Km trench. The villages were once a region plagued by severe waterlogging due to continuous flood.

Before this initiative, waterlogging restricted the movement of community members, gave rise to a mosquito-infested environment and frequent snake bites. The consequences were dire, with an alarming increase in patients suffering from diseases like malaria, dengue, and typhoid. Moreover, villagers couldn't take animals for grazing as the rising water levels reach the verandas.

Trench restoration allowed rainwater to efficiently collect in the trench and was directed to drainage system, completely eradicating the difficulties faced by villagers. This solution has **prevented waterlogging** and also eliminated the ideal breeding grounds for disease-carrying mosquitoes, leading to a **significant decrease in illnesses**, especially among children.

Villagers have now begun connecting their verandas with the road through permanent structures. This may seem like a small infrastructural change, but it symbolizes the growing sense of progress and empowerment within the community.



रा.प्राथमिक विद्यालय भगवतपुर

क्षेत्र-हल्द्वानी, जिला - नैनीताल, स्थापना वर्ष-1992 भवन निर्माण वर्ष-1999

राजकीय: प्राथमिक: विद्यालय: भगवतपुर:



EDUCATION

Rural education in India is pivotal for growth, requiring significant enhancements to uplift rural youth. Prioritizing rural education boosts economies, elevates living standards, and nurtures vibrant communities. Thus, SUVIDHA leads initiatives for enriched learning, encompassing infrastructure, provide clean water, sanitation in schools, and promote digital learning.



140

Schools Benefitted



39092

Students Impacted

INTERVENTIONS IMPLEMENTED IN THE REPORTING YEAR



DEVELOPMENT OF SCHOOL INFRASTRUCTURE

In order to enhance learning environments for children, classrooms were renovated to foster focused and comfortable spaces. Availability of safe drinking water and sanitation facilities in rural schools reduced absenteeism and enhanced safety. Boundary walls amplified asset security and overall safety. These improvements resulted in increased enrolment and attendance, reduced dropout, academic achievements, and socio-emotional growth.



DIGITAL AND VISUAL INITIATIVES

Smart classes with Digital boards in rural areas brought fast-track learning, enhanced tech skills and opportunity to explore educational and income avenues. Leveraging the "Building as Learning Aid" (BaLa) concept, schools featured wall paintings for an engaging and child-friendly atmosphere. Digitalizing the Panchayat Bhawan in Assam provided internet access for job searches and online courses, benefiting 48 village youth.



SOLAR ELECTRIFICATION OF SCHOOL BUILDINGS

Solar-powered rural schools in five Northeastern states revolutionized digital learning. Uninterrupted power facilitated computer-assisted learning, enhanced student engagement, attendance, and reduced dropouts, championing renewable energy and sustainability. With a participatory approach, School Management Committees ensure asset maintenance, curbing carbon emissions, and providing tech exposure to rural youth.





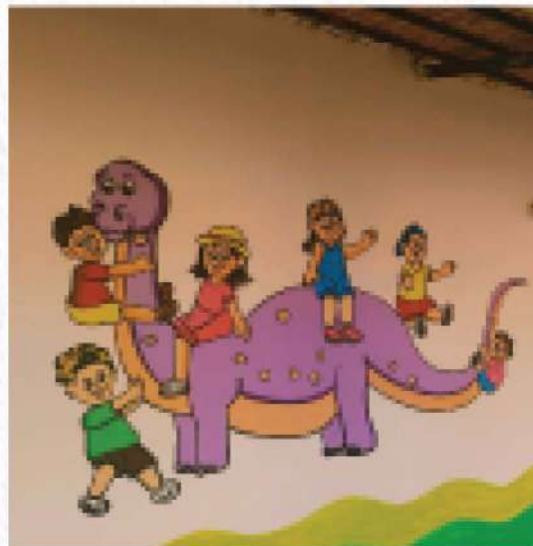
REFURBISHING ICDS CENTRES

Focused on holistic growth for children aged 0 to 6, the organization partnered with the Education Department to enhance ICDS Centres in Assam and Madhya Pradesh. Through renovations and essential resources, including play and study materials, these centres promoted comprehensive development. BaLa Paintings showcased awareness and learning materials on-site, effectively boosting children's engagement and fostering rural children's overall well-being.



INTER SCHOOL CO- CURRICULAR ACTIVITY

The Higher Secondary School in Itawadi village, Madhya Pradesh, organised an Inter School Sports Competition to cultivate essential life skills among students. Engaging 155 students from 6 Government Higher Secondary Schools, the competition encompassed diverse sports like Kho-Kho, Kabaddi, Rope Jump, Long Jump, and Sprints. These events propelled the youth to participate in subsequent competitions at the Block and District levels.



46 Schools Benefitted

BaLA Paintings in School Campus

13153 Students Benefitted

42 Schools Benefitted

Development of Smart Classes

11953 Students Benefitted

5 Schools Benefitted

Development of School Infrastructure

503 Students Benefitted

25 Schools Benefitted

Solar Electrification of School Buildings

10853 Students Benefitted

6 Centres Refurbished

Refurbishing ICDS Centres

230 Households Benefitted

8 Schools & 34 ICDS Centres Benefitted

Developmental Impact of Toys Distribution

1485 Students Benefitted



In the reporting period, several education projects have commenced

"**Gyandeep**" by Mahindra & Mahindra in Udham Singh Nagar District, Uttarakhand.

"**Developing Digital Smart School**" by Kutch Railway Company (KRC) in Banaskantha District, Gujarat.

"**Gram Seva**" by SBI Foundation in Chamba District, Himachal Pradesh.

These projects prioritize the holistic development of children, focusing on improved infrastructure, smart classes, computer labs, remedial classes, enhanced sanitation and drinking facilities, and the establishment of libraries catering to rural students. Additionally, initiatives such as inter-school events and scholarships aim to create a conducive learning environment.

Under the **Gram Seva Project**, remedial classes and computer labs have been established in each of five villages to improve the understanding and technological skills of students in rural areas.

CASE STUDY

EMPOWERING EDUCATION

TRANSFORMING REMOTE COMMUNITIES THROUGH SUSTAINABLE SCHOOL DEVELOPMENT

In Assam's Behali Block, the educational landscape faced numerous challenges, including inadequate infrastructure, resource scarcity, and low literacy levels. Dilapidated school buildings and limited access to essential facilities created an unfavourable environment for teaching and learning. The absence of educational materials and technology further compromised the overall quality of education.

SUVIDHA, with active community involvement and School Management Committees (SMCs), revitalized seven schools. This transformation included repairs, availability of safe drinking water, improved sanitation, engaging BaLA Paintings, establishing libraries, and Smart Digital Boards for modern education. Local communities contributed to construction and repairs, while SMCs ensured sustainability.

The initiative resulted in **reduced dropouts, increased student enrolment** and even **attracting students from private English-medium schools**. Remarkably, a private school in the region closed as students chose the improved government schools. **Enrolment in these schools increased by an average of 71%.**

Additionally, three schools - Bimala Adarsha LP & ME School, Borajuli Thandapani LP School, and Lalpukhuri LP School in Bihmari - have received awards under the Assam Government's Gunotsav Program, recognizing their exceptional infrastructure and learning outcomes, presented by the Block Education Officer.

This case study highlights significant transformation in education, showcasing the potential for positive and sustainable educational growth.



CHARGE TO CHANGE

SOLAR POWERING RURAL EDUCATION

In the pursuit of change and sustainability, SUVIDHA embarked on a mission to illuminate rural education in the remote areas of North Eastern India- Nagaland, Manipur, Mizoram, Meghalaya, and Tripura. By addressing energy challenges and harnessing solar power, this case study underscores the transformative impact on education and climate change mitigation.

Remote regions grapple with power shortages, interruptions, and irregularities, impacting students' learning opportunities and access to modern literacy resources. Some schools had no electricity, limiting computer usage and digital literacy.

SUVIDHA implemented a visionary project in **25 government schools installing a 3KWp solar infrastructure per school** - panels, batteries for backup, and hybrid inverters. This bridges the energy gap, enriching rural students' learning by providing digital resources and modern teaching tools.

Solar power has brought remarkable transformation, allowing schools to use computers and offer smart classes. In Mizoram, night classes are held during winter months, addressing power challenges and aiding students preparing for Board exams. This access to uninterrupted power has revitalized education, elevating learning environments in the remote regions **benefitting rural students.**



Solar irrigation emerges as the sunlit catalyst for sustainable growth. Harvesting sunlight, it not only nourishes crops but also cultivates a future where fields flourish independently, fueled by clean energy.







Promotion of Alternative Livelihood

At SUVIDHA, we take centre stage in fostering a resilient future through our adopted community-driven approach, which amplifies the voices and aspirations of rural residents and addresses the intricate challenges woven into rural life. We create sustainable livelihoods that not only tackle immediate concerns but also ignite lasting transformations. With diverse initiatives and skill-enhancement programs, we embark on a collective journey toward self-reliance, prosperity, and a brighter, more sustainable future, breaking the cycle of poverty and revealing the boundless potential within communities.



3Lakh+

Man-days
Generated



13

Rural
Enterprises



5,00,00,000+

Revenue
Generated

INTERVENTIONS IMPLEMENTED IN THE REPORTING YEAR



GOAT REARING

30 beneficiaries in Assam are empowered through goat rearing, offering economic viability, nutritional and food security. The project equipped beneficiaries with training, technical support, and resources. Each beneficiary received five goats—four females and one male—to facilitate population growth and income generation. With reinvestment, income multiplies, addressing various household needs, leading to economic stability and an improved quality of life.



PIGGERY

SUVIDHA's Assam HRDP Project has promoted piggery as an alternative livelihood for **22 beneficiaries** from vulnerable communities. With swift growth and prolific breeding, piggery has delivered income generation, self-sustainability, and livelihood diversification. The intervention reduced reliance on external aid, fostered self-reliance. Effective management led to surplus piglets and pork sales, improved economic well-being and empowered communities for a sustainable future.



INTEGRATED FISH CUM DUCK FARMING

The Farming in Bihmari Panchayat, Behali Block, Bishwanath District, Assam, has transformed the lives of **15 beneficiaries**. They received a custom duck shed above existing ponds, promoting natural pond enrichment with duck waste (enhanced nutrient cycling and water quality). They were provided **20 ducks, 20 kgs of fingerlings** (Rohu, Bhaku, Grasscar, Kamal car), along with duck and fish feed. The initiative, including pond renovations, enhances sustainable farming practices. The initiative has significantly increased the beneficiaries' income, fostered economic resilience and promoted a diversified livelihood strategy within the community.



SERICULTURE

Rooted in the ancient art of cultivating silk, sericulture emerges as a beacon of opportunity, intertwining economic growth, skill enhancement, and environmental sustainability. With a focus on creating employment and supporting farmers, the intervention thrives in Munsyari Bolck of Pithoragarh District in Uttarakhand with Oak Tasar.

The activity takes root with a **100-hectare Manipuri Oak plantation**, fostering diversity and providing raw material for silkworms. This communal initiative spans community and Panchayat lands, supporting the local economy and enriching regional biodiversity. To ensure robust sericulture, **1400 Disease-Free Layings (DFL)** seeds have been dedicated to the rearing of spring and high-altitude commercial crops. A network of **43 rearing sheds and a collective Chawki Rearing Centre** empowers farmers, leading to the **sale of 61,200 cocoons**, and a brighter financial outlook for **144 families**.



MUSHROOM FARMING

Mushroom cultivation has emerged as an effective tool in reducing poverty and enhancing livelihoods, particularly in Bihar and Odisha. With the establishment of 10 incubation units (5 units in each state), this initiative aims to provide local farmers with a reliable source of income and access to fast-yielding and nutritious food.

Through on-farm training, farmers learned organic oyster mushroom cultivation techniques, market strategies, and profitability. With **225 kg of oyster spawns** given to **50 farmers**, **production of 1525 kg of mushrooms** was harvested. The initiative emphasized oyster mushrooms as a nutritious food. As they were new in the region, promoting their nutritional value led to households consuming more. This diversified diets, revealed the health benefits and gained acceptance as a preferred choice.

Benefits:

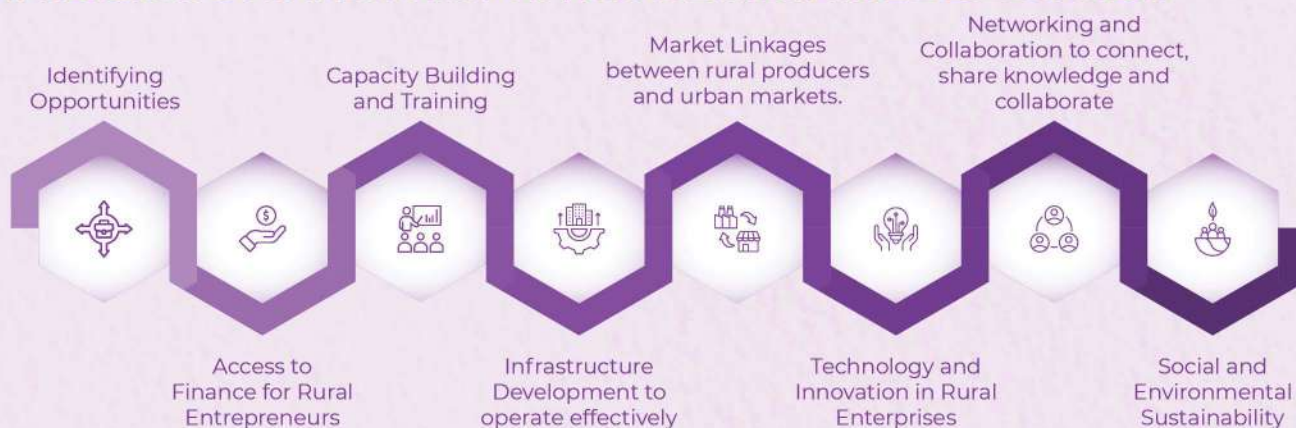
- **High Yield:** More produce, more income.
- **Easy Cultivation:** Farmer-friendly techniques.
- **Quick Returns:** Faster growth, quicker earnings.
- **Nutrition on Plate:** Oyster mushrooms enriched diets.
- **Income Diversification:** Additional revenue stream.



PROCESSING UNITS (ENTERPRISE DEVELOPMENT)

SUIDHA has developed Enterprises for rural communities in various projects with the objective to foster economic growth and improve livelihoods by supporting the development of small businesses and entrepreneurial activities in rural areas. The organization has adopted key considerations and approaches for enterprise development in order to contribute to poverty reduction, job creation, and overall economic development of rural areas.

COMPREHENSIVE FRAMEWORK FOR RURAL ENTERPRISE DEVELOPMENT



Some of the Processing Units/Enterprises developed by the organization in various projects are as follows:

Rice Processing Unit

SUIDHA has established, a rice processing unit in, Golaghat, Assam considering the state's potential for rice cultivation. The objectives of the unit are value addition of raw rice, Increased income of farmers, Improved rice quality, reduction in post-harvest losses and Increased market access for farmers.

The unit is managed by "Athkheliya Namghar Farmers Producer Company Limited," a Farmer's Producer Organization consisting of 1500 farmers. The unit operates in two modules: processing raw paddy under the brand "Gaon Originals" and offering processing services at lower rates than the market. This enables cost savings for farmers and increased income. The unit processes 40-45 quintals of paddy monthly, yielding by-products like rice husk, bran, and broken rice.

The unit offers various rice products, including Joha Rice recognized for its antioxidant properties and high starch content, Black Rice renowned for its potential health benefits, and Ranjeet Rice, a popular local rice variety in the region.. As of now, the unit has processed 147 quintals of paddy, generating a total revenue of Rs. 53,611/- through processing charges. The intervention has multiplied rice value, propelled farmer prosperity, and amplified market reach.



Mustard Oil Extraction Unit

In Bihar, high-yield mustard varieties are backed by improved seed access and have bolstered productivity and overall production. The mustard oil extraction unit managed by "Manigachhi Farmer Producer Company Limited," has given harvested mustard seeds a valuable twist. Farmers have found a dependable market, securing extra earnings from mustard crops.

Unit's Highlights:

- **Reliable Market:** Unit guarantees farmers a steady market for their produce.
- **Oil Transformation:** Mustard seeds turn into valuable mustard oil.
- **Packaging Variety:** Mustard oil is packaged in 500ml and 1000ml bottles.
- **Raw Material Support:** 200 kg of mustard seeds distributed among 200 beneficiaries.
- **Productive Cultivation:** Approx. 38 hectares cultivated, with 372 Quintals approx. production.
- **Income Boost:** The unit has boosted farmers' income through processes like raw material procurement and sale of finished products.
- **Local Jobs:** Oil production stages offer employment, easing local unemployment.
- **Value Addition:** Mustard crop gains value with oil extraction.
- **Local Industry Boost:** The unit advances local industry growth.

Overall, the establishment of the mustard oil extraction unit is a commendable initiative that capitalizes on Bihar's potential as a major mustard-producing state. It aligns with the state government's efforts to promote mustard cultivation and supports the agricultural and economic development of the region fostering sustainability.



Makhana Processing Unit

In Bihar, Makhana (fox nuts) holds immense agricultural value, especially in Darbhanga, Madhubani, and Muzaffarpur districts. Acknowledging this, a flavored Makhana processing unit was established, led by "Manigachhi Farmer Producer Company Limited."

With the project support, 10 quintals of Makhana seeds reached **77 beneficiaries** at a 90% subsidy. This spurred Makhana cultivation across **106.19 hectares**, with a yield of **7000 quintals**. Harvested pods underwent meticulous processing, unveiling white Makhana seeds. These seeds were then dried, roasted, and packaged for sale in diverse flavors and sizes.

This unit transforms more than Makhana—it transforms livelihoods:

- **Grading and Value Boost:** Raw Makhana's value ascends through grading.
- **Income Amplification:** Enhanced value addition yields increased farmer income.
- **Wider Market Reach:** Farmers access expanded markets, catering to flavored snacks.
- **Employment Uplift:** Unit fosters local employment and infrastructure.
- **Local Industry Promotion:** Unit anchors local industry growth.

The Makhana unit contributes in changing lives, fosters sustainability, and paints a brighter future for Bihar's farming communities.



CASE STUDY



FROM TRADITION TO TRANSFORMATION EMPOWERING CHANGE IN ERI SILK REARING

In the villages of Meghalaya, a longstanding practice of Eri Silk rearing encountered obstacles due to the absence of scientific insights and modern methodologies. Challenges such as inadequate sustenance for Eri worms, reliance on wild plants, limited land holdings, dearth of knowledge and reliance on conventional methods cast shadows on household incomes. Recognizing Eri silk's regional significance, SUVIDHA undertook a transformative journey to revive these traditional practices.

In Warmasaw village, Jirang Block, a group of 20 women mastered advanced rearing techniques through awareness sessions, exposure visits, and specialized training at the District Sericulture Office, Nongpoh. A localized demonstration unit was established replacing their individual spaces, fostering community rearing and better space utilization. The group was supported with inputs such as a silk rearing SOP, castor plants, bamboo trays, and 32 DFLs (Disease Free Layings) per beneficiary. This support resulted in approximately **25 kg of cocoons** and **80 kg of silkworms**, effectively diversifying income streams and showcasing their newfound expertise.

Farmers reaped considerable benefits, with the group earning about **Rs. 46,500/-** signifying financial stability of women. This allowed them to invest in education, healthcare, and well-being, ensuring a sustainable future for their families.

PARTICIPATION IN NATIONAL TRADE FAIR

SUVIDHA actively engaged in national trade fairs, gaining unmatched exposure, networking opportunities, and valuable market insights. The brand 'n Originals' showcased its rural agricultural products at these events, serving as a platform for networking and staying updated on industry trends.

BIOFACH

SUVIDHA participated in BIOFACH INDIA, the country's premier organic industry exhibition held from 1st to 3rd September 2022. The focus was on high-level business networking, establishing key connections with potential buyers interested in procuring Gaon Originals products.



EXPO ONE - ORGANIC NORTH EAST

SUVIDHA took part in the Organic Expo One, an exhibition highlighting organic products from the North East, held from 3rd to 5th February 2023. The showcase featured rural organic products from Meghalaya and Assam, processed in processing units established under various programs.





Women Empowerment

Women empowerment is essential for inclusive development and socio-economic progress in communities. Thus, SUVIDHA's fundamental philosophy revolves around empowering women, and this principle serves as the guiding force for all the interventions. It ensures that women are at the forefront of all activities conducted across different areas of focus, prioritizing them as the primary beneficiaries.



22,781

Women Benefited through Agriculture



12719

Women Benefited through Drudgery Reduction



60

 Self-Help Groups (SHGs)


818

 Members in SHGs


20

 User Groups


440

 Members in User Groups

STRATEGIES ADOPTED FOR WOMEN EMPOWERMENT:



Self-Help Groups (SHGs)

SUVIDHA empowers women by nurturing self-help groups, fostering mutual support, decision-making, and access to resources. SHGs become platforms for economic growth and social unity.



Income Generation

Engaging in activities such as livestock rearing, handicrafts, artisanal work, food processing with value addition, tailoring and sewing, agribusiness, horticulture, and microenterprises empowers women both economically and socially. This income generation fosters confidence, equality, and community development among women.



Leadership Building

Training and mentoring lead to capable, empowered rural women who actively engage in community decisions.



Market Linkages

By establishing market connections and online platforms, women gain access to wider markets, enhancing sales and financial growth. Gaon Originals and e-commerce initiatives bolster local products.



Skill Development

Through vocational training, women acquire skills in tailoring, handicrafts, agriculture, and more, igniting entrepreneurship and self-reliance. Partnerships with institutions and mentorship fuel these endeavours.



Financial Inclusion

Enabling access to microfinance, savings, and credit elevates rural women's economic status, enabling investments and asset-building.



Health Initiatives

Health camps, awareness sessions, and training promote women's well-being, informed decisions, and reproductive health.

WOMEN FOCUSED INTERVENTIONS IN THE REPORTING YEAR



DAIRY

The “Nayi Umeed Doodh Utpadan Samuh,” a group of 12 women, established a thriving dairy unit in Madhya Pradesh. With bank accounts, machinery, and appliances, **they collect 80 litres of milk daily** and earn extra income from bulk orders, such as a Diwali order of **130 kg milk fudge**. They offer various dairy products like milk, ghee, paneer, buttermilk, and khoya. With plans to expand through a Farmers’ Producer Organization (FPO), this initiative has economically empowered women and promoted entrepreneurship among fellow women. It’s a remarkable journey from daily wage laborers to successful entrepreneurs, securing their future with pride and self-reliance.



ERI SILK

In Meghalaya and the northeast region, the activity aims to bridge knowledge gaps and modernize techniques. Through awareness sessions, group formation, demonstration units and technical training, women farmers gain expertise in silkworm rearing, disease management, and spinning. With 2,560 Disease-Free Layings (DFLs) distributed among **80 Eri Silk rearers**, cocoons and silkworm flourish. A testament to success, a single cycle yields **85.33 kg of cocoons**, earning **Rs. 72,530/-** and **approximately 320 kg of silkworms**, earning **Rs. 1,12,000/-** for the farmers’ group.



HANDLOOM UNIT

SUVIDHA’s HRDP project fosters change by establishing women-led handloom units in Assam’s Nathun Bihmari Village and Maheshwar Block, Madhya Pradesh. These centres impart traditional weaving skills, particularly focusing on **Maheshwari sarees, Assamese Ghamucha, Shawls, and Sarees**—an emblem of cultural heritage and potential tourism attraction.

Challenges Faced by the existing weavers

- Low income despite efforts due to privately owned centres.
- Limited market access in remote locations.
- Threat to local art due to weavers shifting occupations

Two Self-Help Groups of fifteen and twenty-five skilled women weavers were given skill development training and are now engaged in producing high-quality Maheshwari Sarees and Assamese apparels that meet premium market standards. The initiative has preserved the local art and culture while also creating income opportunities for traditional women weavers, thus enhancing their socio-economic development. Women group of Maheshwar collectivized into a Farmers Producer Organization (FPO) called **Maheshwar Hathkargha Producer Company Ltd.** with the aim to efficiently manage the weaving centres, sales outlets, and establish backward-



forward linkages for sustained production and marketing of Maheshwari Sarees. The marketing of these handloom items is facilitated through the Gaon Originals outlet and a sales outlet at Maheshwar Market.

Average Monthly income of each women members is **Rs. 6500/-**.



SEWING AND TAILORING CENTRE

SUIDHA's HRDP project establishes sewing and tailoring centres in Assam and Madhya Pradesh, fostering rural women's skills and sustainable income.

In Assam, the sewing centre has trained **150 women**, uplifted their skills and transitioned from daily wage labour. A Self-Help Group of twenty members emerged, collectively producing and marketing clothing items, receiving orders including bulk ones from schools.

In Madhya Pradesh, the Mahetwada sewing centre trained **50 women**. A dynamic SHG, **Udan Mahila Utpadak Samooh**, was formed with twenty-two women excelling in garment production, and collective marketing. Linkages with nearby Indore market were established for bulk garment production. SHGs manage transactions via bank accounts, overseeing production records and stock.

Outcomes/Impact:

- **Income Enhancement:** Earned average monthly income of Rs. 2700/-
- **Skill Development:** Confidence and financial independence cultivated.
- **Decent Work Environment:** Escaping daily wage labour, especially for poorest households.
- **Gender Equality:** Breaking barriers, empowering women.
- **Community Building:** Socializing, idea sharing, and support networks thrive.





SPICE PROCESSING UNIT

SUIDHA has empowered women through promotion of community-led spice processing units in Assam, anchoring value addition of locally grown spices.

One of the spice units is managed by 11-member self-help group and sources local spices like turmeric, coriander, chilly, and black pepper. It conducts grading, sorting, grinding, and packaging, selling processed spices as "Goan Originals" in local, regional, and national markets. The women group has marketed **15 quintals of spice** so far.

The other Spice unit in Golaghat catalyzes value addition of crops such as ginger, turmeric, black pepper, cinnamon, cardamom, and bay leaf. The unit develops various spice products, including chicken masala, mutton masala, fish curry masala, garam masala powder, ginger powder, black pepper powder, and turmeric powder. These products are packaged in 100gm boxes, ensuring proper packaging and branding.

Spice Processing Unit Impacts:

- **Enhanced Income:** Farmers venture into value-added activities, boosting earnings.
- **Employment Creation:** Opportunities multiply for skilled workers.
- **Value Addition:** Agro-products ascend market worth.
- **Intermediary Elimination:** Direct selling augments profits.
- **Empowerment:** Skill development fuels economic growth.
- **Local Agricultural Promotion:** Regional produce gains prominence.
- **Community-led Enterprise:** Sustainable local empowerment blossoms.

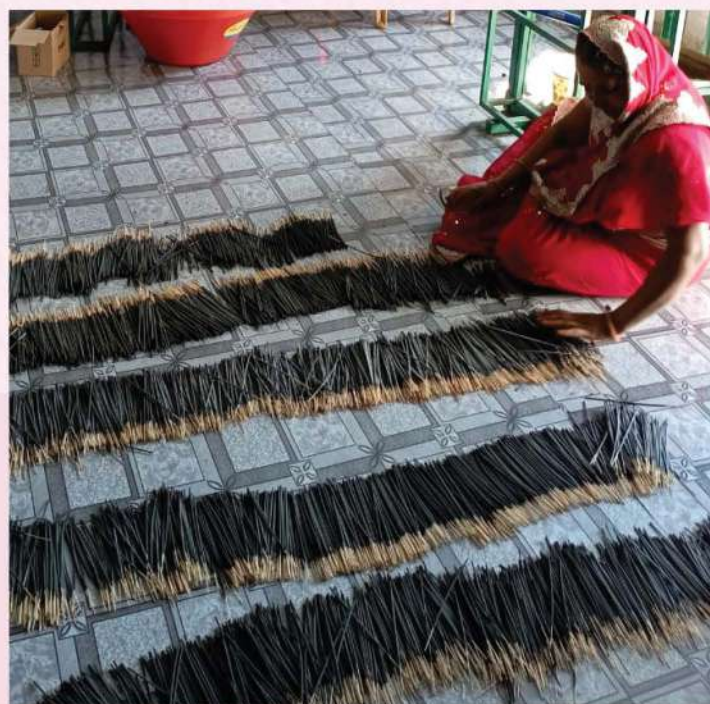


INCENSE STICKS UNIT

The incense stick unit in Village Mohna Satgodia, Madhya Pradesh has transformed women's lives. The '**Nayi Raah Dhoop Agarbatti Samuh**' – a self-help group of 10 members was trained to create high-quality incense sticks. Equipped with the necessary machines and trained in operating them safely, the women focused on manufacturing high-quality incense sticks of various fragrances. They produced 1100 kg, selling 900 kg to local shops and villages. These affordable, fragrant sticks became popular for their quality.

Results:

- **Empowered Women:** Average monthly income now Rs. 7500/-, enhancing well-being.
- **Uplifted Households:** Better income and conditions elevated families' lives.
- **Entrepreneurial Success:** Women turned thriving entrepreneurs.
- **Community Impact:** Improved living conditions rippled positively through the community.



In the reporting period, 'Unnati' project in Sirmour and Solan Districts and 'Gram Seva Project' in Chamba District, Himachal Pradesh funded by SBI Foundation have been commenced that empowers women by providing accessibility to income enhancement opportunities, promoting entrepreneurship, strengthening SHGs and conducting workshops on health, gender, financial literacy and legal rights of women.

Women are operating the digitally-equipped Gram Seva Kendra established under the **Gram Seva Project**, bringing digital services, government scheme applications, and ID card processing to rural doorsteps, bridging urban-rural digital divide.

CASE STUDY

WEAVING DREAMS

JOURNEY FROM DAILY WAGE LABOURER TO SKILLED WEAVER

Payal Patidar, residing in Matamur Village of Madhya Pradesh, bore the weight of financial hardship, leading a life overshadowed by poverty. Her daily toil in the fields, earning a mere Rs 100, barely sustained her family amidst inflation, pushing them to the brink of vulnerability.

A handloom centre under the HRDP Program was established in the village. The project team, reaching out to village women, included Payal. The initiative became the catalyst of change in her life.

Payal embraced the opportunity and underwent training at the Handloom Centre. From mastering the art of wielding the Katla to intricacies like joining broken threads, she progressed from crafting cotton cloth to weaving intricate sarees—**Tani Silk, Reva Border, Zari Patta**.

Her average monthly income soared to **Rs 9500/-**, deposited directly into her bank account. This financial infusion not only brought stability but also marked a significant increase in savings.

Payal's life underwent a remarkable transformation. No longer confined to the scorching fields, she found meaningful employment in her own village, becoming a skilled saree weaver. Her family, once grappling with adversity, now takes pride in her achievements. She is investing the saved money in ensuring the quality education of her children.





SCAN
TO SHOP



MARKET LINKAGE PLATFORM

GAON ORIGINALS

EMPOWERING RURAL ARTISANS & WOMEN FARMERS



EMPOWERING RURAL PRODUCER GROUPS

The organization has played a pivotal role in developing the brand “Gaon Originals” and effectively marketing rural produce by farmers and artisans under this label, facilitating market connections, both locally and internationally, to ensure sustainable income generation. This emphasis on high-value organic and handloom products has brought considerable benefits to the rural producers.

Gaon Originals became a legal entity with multiple farmer-producer companies under its umbrella, and it operated a live e-commerce portal at www.gaonoriginals.com. Additionally, two outlets are functional, one in Noida and another in Madhya Pradesh, while nine processing units established under projects in different states selling their value-added products with the brand name “Gaon Originals.”

The Gaon Originals empowers the rural producers through an elaborate set of practices from Ground Zero to make their products accessible at customers' door step.

- Identification and selection of rural produce and products
- Formation of local farmer and producer groups
- Value chain development in ground zero
- Specialized training for rural produce
- Linkage with Financial Institution Capacity Building
- Verification and certification of products
- Product processing and packaging
- Certified Gaon products for the global consumers

By providing direct consumer and market access to rural producer companies and rural artisans, Gaon Originals empowers farmers and rural producers ensuring their financial empowerment. With the potential to become India's go-to platform for farmer-producer companies, Gaon Originals has the power to uplift rural communities and enable them to showcase their authentic products to the world.

PRODUCT RANGE UNDER GAON ORIGINALS

RICE
FLOUR
PULSES AND LENTILS
SPICES
PICKLES
TEA
SQUASH
JAM
CANDY
GHEE
HONEY
INCENSE STICKS
SWEETS
FLAVOURED MAKHANA
DRY FRUITS



MAHESHWAR SAREES

In the heart of Maheshwar Block, Madhya Pradesh, a dedicated group of **200 weavers**, predominantly women, have mastered their skills to weave the exquisite Maheshwar Sarees. These artisans underwent rigorous skill development training, aimed at crafting high-quality Maheshwar Sarees that could command top value in the fiercely competitive market.

Each piece of fabric is meticulously dyed using naturally extracted colours and adorned with intricate details, including zari, kinari, gemstones and threads made of gold or silver. Maheshwari sarees are crafted from a variety of materials, including silk, cotton, silk-cotton blends, and even wool. Their airy and lightweight nature makes them the perfect choice for the diverse Indian weather.

Maheshwar Sarees have not only gained popularity locally but also nationally, thanks to their exceptional craftsmanship. They are in high demand among discerning customers seeking timeless and elegant creations.



Vision and Strategy Meet- Action Plan (2023-2028)



NAVIGATING TOWARD IMPACT

INSIGHTS FROM THE VISION AND STRATEGY MEET

In March 2023, the organization convened a Vision and Strategy Meet facilitated by Kutumbh Aspiration Private Limited. Over the course of three days, the workshop aimed to formulate a comprehensive long-term Strategic Action Plan, providing a roadmap to steer the organization's activities and decision-making for the upcoming five years.

The specific objectives of this exercise include:

- To understand the status of Programs, Resources, SWOT (strengths, weaknesses, opportunities, and threats), Sustainability.
- To assess funding opportunities from various sources for the organization.
- To conduct the strategy workshop for developing a shared vision and strategic objectives for the organization.
- To prepare long term Vision and Strategic Plan.

The vision and strategy meeting provided a roadmap for the organization to achieve its mission and goals, and to maximize its impact on the communities it serves.



STRATEGIC INSIGHTS

Field visits, research, stakeholder consultations, and external facilitation contributed to a robust 5-year plan. Insights from industry analytics and the participants informed key focus areas, emphasizing the need for strategic partnerships, funding initiatives, and a reinvigorated organizational approach.



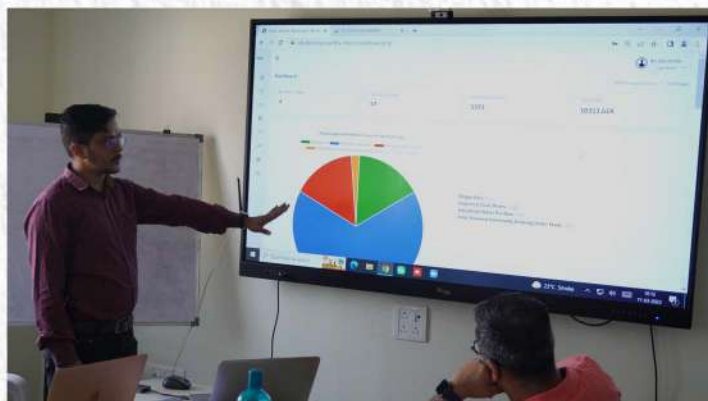
REVISED VISION AND MISSION

SUVIDHA's renewed vision is to become instrumental in bringing long-term social, economic, and environmental changes for resilient communities. The mission aims to drive global sustainability by empowering farmer households through climate-smart agriculture, clean energy, women empowerment, and smart education by 2030.



THEMATIC FIVE-YEAR GOALS

Thematic goals were established to guide the organization's trajectory, focusing on social, economic, and environmental changes. SUVIDHA's commitment extends to impacting approximately 7.5 lakh farmers, offsetting 4 lakh tons of carbon, establishing 100 carbon-neutral villages, reaching out to 1.5 lakh women.





Financial Report



Bahuguna & Associates
Chartered Accountants

Audit, Tax & Advisory

INDEPENDENT AUDITOR'S REPORT

To the members of
Society for the Upliftment of Villagers & Development of Himalayan Areas(SUVIDHA)
Haldwani (Uttarakhand)

Report on the Financial Statements

We have audited the attached Balance Sheet of **Society for the Upliftment of Villagers & Development of Himalayan Areas(SUVIDHA)** as at 31st March, 2023, the Statement of Receipt & Payment and Income & Expenditure Account for the year ended on that date annexed thereto. These financial statements are the responsibility of the management. Our responsibility is to express an opinion on these financial statements based on our audit.

Management's Responsibility For The Financial Statements

Management is responsible for the preparation of these financial statements that give a true & fair view of the financial position & financial performance in accordance with accounting standards generally accepted in India. This responsibility includes the design, implementation & maintenance of internal control relevant to the preparation & presentation of the financial statements that give a true & fair view and are free from material misstatements, whether due to fraud or error.

Auditor's Responsibility

We conducted our audit in accordance with auditing standards generally accepted in India. Those Standards require that we plan and perform the audit to obtain reasonable assurance about whether the financial statements are free of material misstatement. An audit includes examining, on a test basis, evidence supporting the amounts and disclosures in the financial statements. An audit also includes assessing the accounting principles used and significant estimates made by management, as well as evaluating the overall financial statement presentation. We believe that our audit provides a reasonable basis for our opinion.

Opinion

We also report that:

- We have obtained all the information and explanations, which to the best of our knowledge and belief were necessary for the purpose of our audit.
- In our opinion, proper books of account, as required by the law, have been kept, so far as appears from our examination of those books.



Contd....2

-2-

- c) The Balance Sheet and the statement of Receipt & Payment and Income & Expenditure Account dealt with by this report are in agreement with the books of account.

In our opinion and to the best of our information and according to the explanations given to us, the said accounts read together with the significant Accounting Policies and other notes thereon give the information required & in the manner so required, and present a true and fair view in conformity with the accounting principles generally accepted in India:

- (i) In so far as it relates to Balance Sheet, of the state of affairs of the society as at 31st March, 2023;
- (ii) In so far as it relates to the statement of Income & Expenditure Account, the deficit of the society for the year ended on that date; and

Dated : 25/10/2023
Place : Haldwani



For Bahuguna & Associates
Firm Regn. No. 016796C
Chartered Accountants

R.K. Bahuguna
Partner
Membership No. 074151
UDIN:23074151BGWOXB7805

**SOCIETY FOR THE UPLIFTMENT OF VILLAGERS & DEVELOPMENT OF HIMALYAN AREAS(SUVIDHA)
MADHAV PURAN, UDAYLALPUR, RTO ROAD PO ANANDPUR, HALDWANI**

BALANCE SHEET AS AT 31/03/2023			
	SCHEDULE	AMOUNT(RS)	AMOUNT(RS)
<u>SOURCES OF FUNDS</u>			
<u>I.FUND BALANCE</u>			
a> General Fund	[01]	1,69,86,065.53	
b> Asset Fund	[02]	43,44,140.79	2,13,30,206.32
<u>II.LOAN FUND</u>			
a> Secured Loans		-	
b> Unsecured Loans		-	
TOTAL RS	[I + II]		2,13,30,206.32
<u>APPLICATION OF FUNDS</u>			
<u>I.FIXED ASSETS</u>			
a> Opening Block	[03]	68,73,424.00	
b> Add: Addition during the year		29,61,003.00	
c> Less: Depreciation		54,90,286.21	
d> Closing Block		43,44,140.79	43,44,140.79
<u>II.INVESTMENTS</u>			
			80,75,968.00
<u>III.CURRENT ASSETS, LOANS & ADVANCES</u>			
a> Grant Receivable		3,32,06,627.95	
b> Cash & Bank Balance	[04]	3,86,54,453.20	
c> Other Current Assets	[05]	32,17,383.00	
	A	7,50,78,464.15	
<u>LESS:CURRENT LIABILITIES & PROVISIONS</u>			
a> Unspent Grant Balance		93,75,893.99	
b> Current Liabilities	[06]	5,67,92,472.63	
	B	6,61,68,366.62	
NET CURRENT ASSETS	[A - B]		89,10,097.53
TOTAL RS	[I + II + III]		2,13,30,206.32
Significant Accounting Policies and Notes to Accounts	[10]		

The schedules referred to above form an Integral part of the Balance Sheet.

For & on Behalf:
Bahuguna & Associates
Chartered Accountants
FRN No: 016796C

CA. R.K. Bahuguna
Partner
MM No: 074151

Date : 25.10.2023
Place : Haldwani
UDIN:23074151BGWOXB7805



For & on behalf:
Society for the Upliftment of Villagers &
Development of Himalyan Arens (SUVIDHA)

**SOCIETY FOR THE UPLIFTMENT OF VILLAGERS & DEVELOPMENT OF HIMALYAN AREAS(SUVIDHA)
MADHAV PURAN, UDAYLALPUR, RTO ROAD PO ANANDPUR, HALDWANI**

INCOME & EXPENDITURE ACCOUNT FOR THE PERIOD ENDED ON 31/03/2023

I.INCOME

	SCHEDULE	AMOUNT(RS)	AMOUNT(RS)
Grants	[07]		23,56,93,953.60
Donation			9,764.00
Interest Income	[08]		11,73,508.50
Administration Charges Recovered from Project			93,04,651.76
			<u>24,61,81,877.86</u>

II.EXPENDITURE

Expenditure on objects of the society

Preservation of environment

Footprint Climate Action		3,66,20,755.13	
Verified Carbon Emission Reduction Programme		2,42,10,588.56	
Sustainable Agriculture Programme		5,82,03,192.40	
Praynas - Bio Gas CDM		41,14,978.60	
Water Hygiene		33,36,622.00	
Livelihood Projects		<u>24,37,196.00</u>	12,89,23,332.69

Relief to the Poor Projects

Holistic Rural Development - Assam		2,05,45,522.50	
Holistic Rural Development - MP		1,59,94,819.51	
Focused Rural Development Project		2,96,51,148.60	
Gram Sewa		<u>25,78,049.20</u>	6,87,69,539.81

Education

Digital Learning and education development in Schools			2,84,24,766.86
---	--	--	----------------

Other Programme Expenses

			29,60,947.00
--	--	--	--------------

Non-Recurring Expenses

			29,61,003.00
--	--	--	--------------

Establishment and Administrative Expenses

	[09]		1,52,18,865.14
--	------	--	----------------

Depreciation

	[03]	54,90,286.21	
--	------	--------------	--

Less: Transferred to Asset Fund

		<u>54,90,286.21</u>	-
--	--	---------------------	---

24,72,58,454.50

III.EXCESS OF INCOME OVER EXPENDITURE

(10,76,576.64)

Significant Accounting Policies and Notes to Accounts

[10]

The schedules referred to above form an Integral part of the Income & Expenditure Account.

For & on Behalf
Bahuguna & Associates
Chartered Accountants
FRN No: 0167966

[CA R.K. Bahuguna]
Partner
MM No: 074151

Date : 25.10.2023
Place : Haldwani
UDIN:23074151BGWOXB7805



For & on behalf:
Society for the Upliftment of Villagers &
Development of Himlayan Areas (SUVIDHA)

SOCIETY FOR THE UPLIFTMENT OF VILLAGERS & DEVELOPMENT OF HIMALYAN AREAS(SUVIDHA)
MADHAV PURAN, UDAYLALPUR, RTO ROAD PO ANANDPUR, HALDWANI

RECEIPTS & PAYMENT ACCOUNT FOR THE PERIOD ENDED ON 31/03/2023

RECEIPTS

	SCHEDULE	AMOUNT(RS)	AMOUNT(RS)
Cash & Bank Balance b/d:			2,13,17,497.11
Grants		26,46,49,522.44	
Donation		9,764.00	
Interest Income		11,73,508.50	26,58,32,794.94
Increase in Loans & Advances			1,97,503.00
			28,73,47,795.05

II. PAYMENT

Expenditure on objects of the society

Preservation of environment

Footprint Climate Action	3,45,68,055.14	
Verified Carbon Emission Reduction Programme	2,30,53,214.26	
Sustainable Agriculture Programme	5,80,59,192.40	
Prayaas - Bio Gas CDM	41,14,978.60	
Water Hygiene	32,36,622.00	
Livelihood Projects	23,78,625.00	12,54,10,687.40

Relief to the Poor Projects

Holistic Rural Development - Assam	1,90,32,471.00	
Holistic Rural Development - MP	1,48,30,322.00	
Focused Rural Development Project	2,78,75,866.00	
Gram Sewa	25,78,049.20	6,43,16,708.20

Education

Digital Learning and education development in Schools		2,70,85,592.00
---	--	----------------

Other Programme Expenses		29,60,947.00
Non-Recurring Expenses		29,61,003.00

Establishment and Administrative Expenses

Decrease in Current Liabilities		1,52,18,865.14
		26,63,571.11

Cash & Bank Balance c/d:		4,67,30,421.20
		28,73,47,795.05

Significant Accounting Policies and Notes to Accounts

[10]

The schedules referred to above form an Integral part of the Receipts & Payment Account.

For & on Behalf:

Bahuguna & Associates

Chartered Accountants

FRN No: 016796C

(Signature)
JCA. R.K. Bahuguna

Partner

MM No: 074151

Date : 25.10.2023

Place : Haldwani

UDIN:23074151BGWOXB7805



For & on behalf:

Society for the Upliftment of Villagers &
 Development of Himlayan Areas (SUVIDHA)

**SOCIETY FOR THE UPLIFTMENT OF VILLAGERS & DEVELOPMENT OF HIMALYAN AREAS(SUVIDHA)
MADHAV PURAN, UDAYLALPUR, RTO ROAD PO ANANDPUR, HALDWANI**

F.Y. 2022-23

Schedules forming part of financial statements	AMOUNT(RS)
--	------------

SCHEDULE [01] : GENERAL FUND

Opening Balance b/f		
Add: Opening Balance of General Fund-CDM Project	3,06,31,574.95	
Less: Transferred to Asset Fund	(91,18,234.89)	
Add: Excess of Income over Expenditure	34,50,697.89	
Transferred from Income & Expenditure Account	(10,76,576.64)	1,69,86,065.53
TOTAL RS.		1,69,86,065.53

SCHEDULE [02] : ASSET FUND

Opening Balance b/f		
Add: Transferred from General Fund	34,22,726.11	
Add: Assets purchased during the year	34,50,697.89	
Less: Depreciation charged during the year	29,61,003.00	
	54,90,286.21	43,44,140.79
TOTAL RS.		43,44,140.79

SCHEDULE [04] : CASH & BANK BALANCE

Cash in Hand	27,538.00	
Cash at Bank	3,86,26,915.20	3,86,54,453.20
TOTAL RS.		3,86,54,453.20

SCHEDULE [05] : OTHER CURRENT ASSETS

Security Deposits		15,15,009.00
Staff / Vendor Advances		7,13,393.00
TDS Receivable		9,88,981.00
TOTAL RS.		32,17,383.00

SCHEDULE [06] : CURRENT LIABILITIES

Advances for sale of GS CERs		1,12,58,675.00
Expenses Payable		4,06,17,541.78
Expenses Payable - Closed Projects		48,16,255.85
Other Payable		1,00,000.00
TOTAL RS.		5,67,92,472.63

SCHEDULE [08] : INTEREST INCOME

Bank Interest		6,18,881.50
Interest on FD		4,20,608.00
Interest on IT Refund		1,34,019.00
TOTAL RS.		11,73,508.50



**SOCIETY FOR THE UPLIFTMENT OF VILLAGERS & DEVELOPMENT OF HIMALYAN AREAS(SUVIDHA)
MADHAV PURAN, UDAYLALPUR, RTO ROAD PO ANANDPUR, HALDWANI**

F.Y. 2022-23

Schedules forming part of financial statements		AMOUNT(RS)
<u>SCHEDULE 1091: ESTABLISHMENT & ADMINSTRATIVE EXPENSES</u>		
Staff Salaries		1,03,67,424.40
Rent		5,60,000.00
Legal & Professional Fees		13,54,398.98
Travel		8,68,447.00
Bank Charges		10,889.26
Software Charges		1,22,618.00
Office Expenses		9,50,794.20
Office Utilities & Maintenance Charges		9,39,299.30
Insurance		44,994.00
TOTAL RS.		<u>1,52,18,865.14</u>



Partners and Donors



Head Office

SUVIDHA Near H.P. Petrol Pump,
RTO Road Udayalpuri

PO - Aanandpur Haldwani

District - Nainital - 263139

State - Uttarakhand

✉ project@suvidha.org.in

🌐 www.suvidha-india.org

